

Wild edible mushrooms: two case studies

Villa Bolasco, Castelfranco Veneto

26th May 2022

Dott.ssa Alessia Sartori

Dott. Enrico Vidale

Prof. Gai Petit

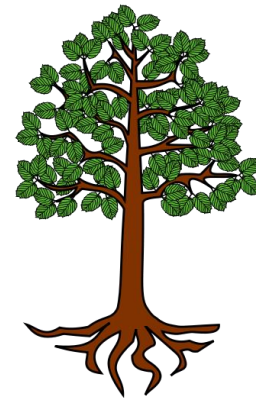
What are truffles...and who feeds them

Truffles are ipogea and mycorrhizal fungi

They ensure some benefits to the plant: water, defense against pathogens...



They are feeding on root exudates

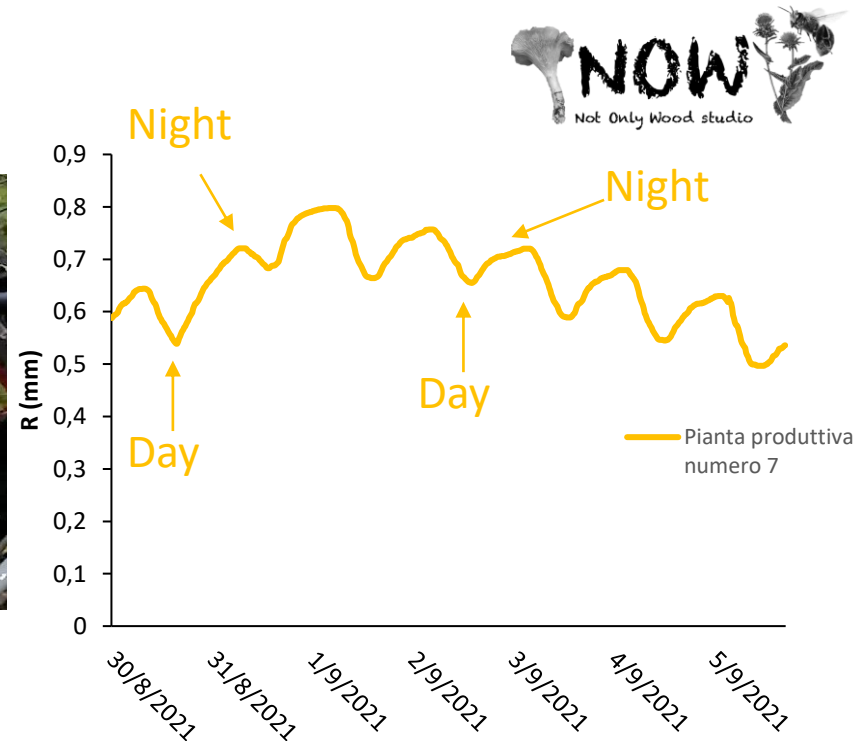
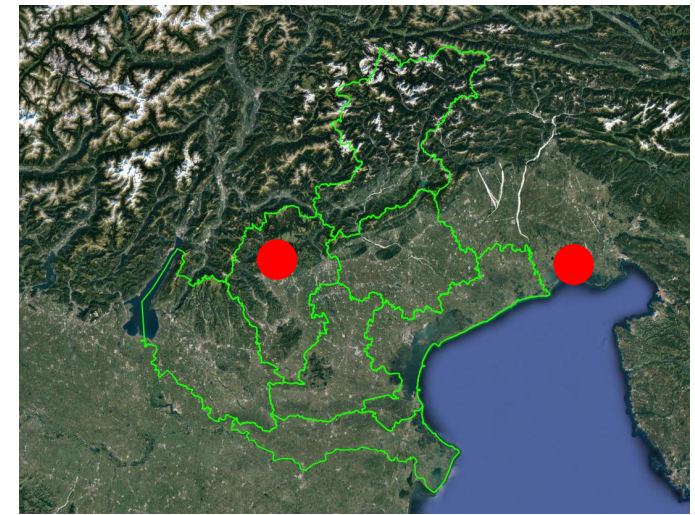


Why, in the management of these mushrooms, do we not consider **the plant**?

Sites and sensors

For each site, we selected 4 productive plants and 4 non productive plants. On each plant were installed:

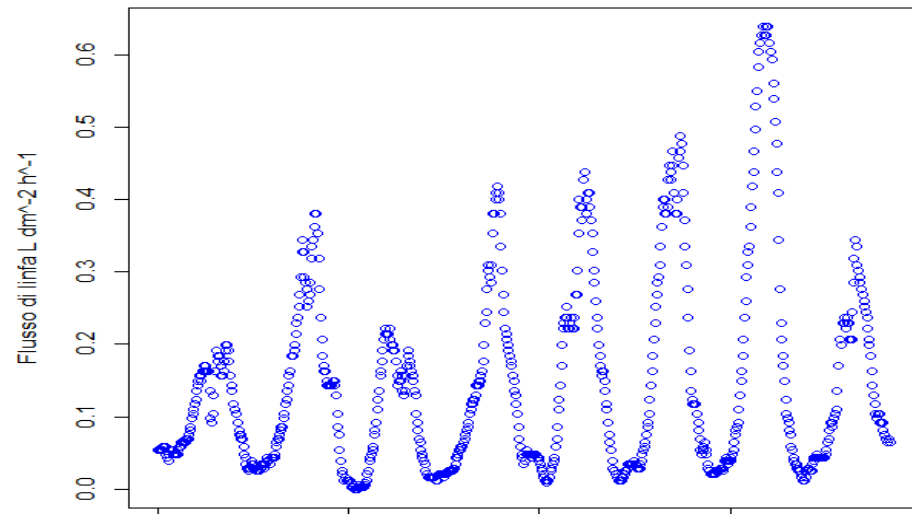
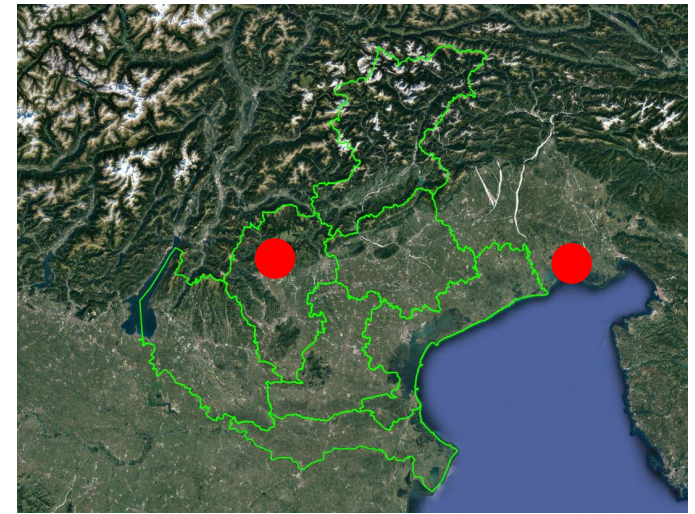
A dendrometer



Sites and sensors

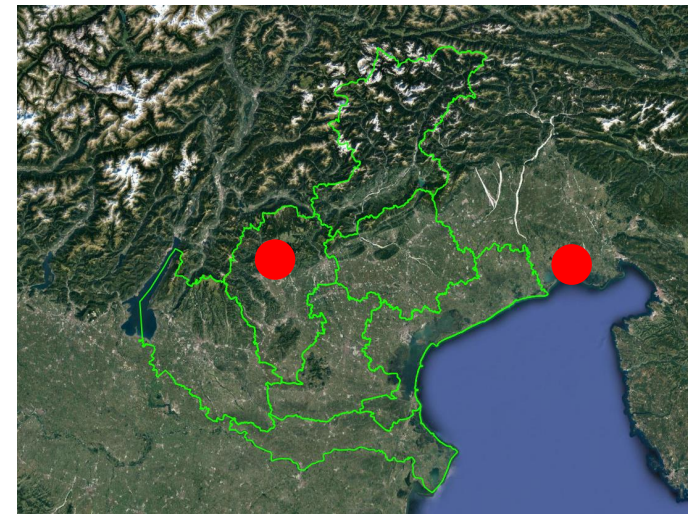
For each site, we selected 4 productive plants and 4 non productive plants. On each plant were installed:

A sap flow sensor



Sites and sensors

For each site we installed some
TDR (Time domain
reflectometry) and hygrometers



Air temperature and
humidity

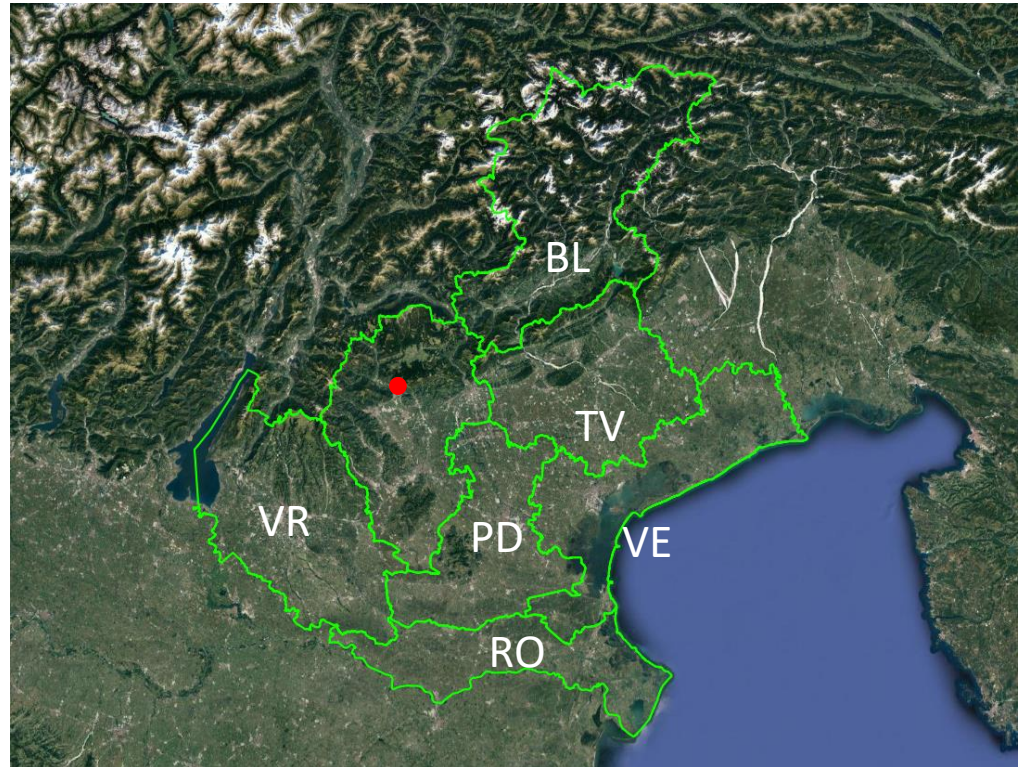


Soil temperature
and humidity



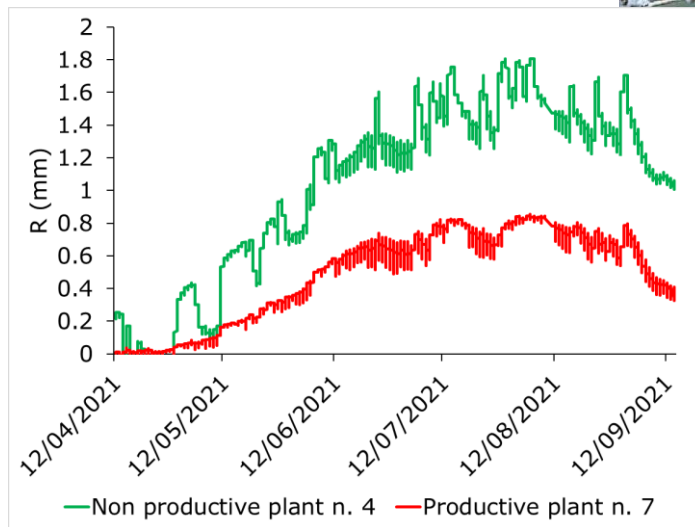
2 sites: Caltrano

- Veneto Region
- Vicenza Province
- Surface 2428 m²
- 500 m a.s.l.
- *Ostrya carpinifolia*
Scop. plantation
- *Tuber aestivum* Vitt.
- Productive and non-productive plants

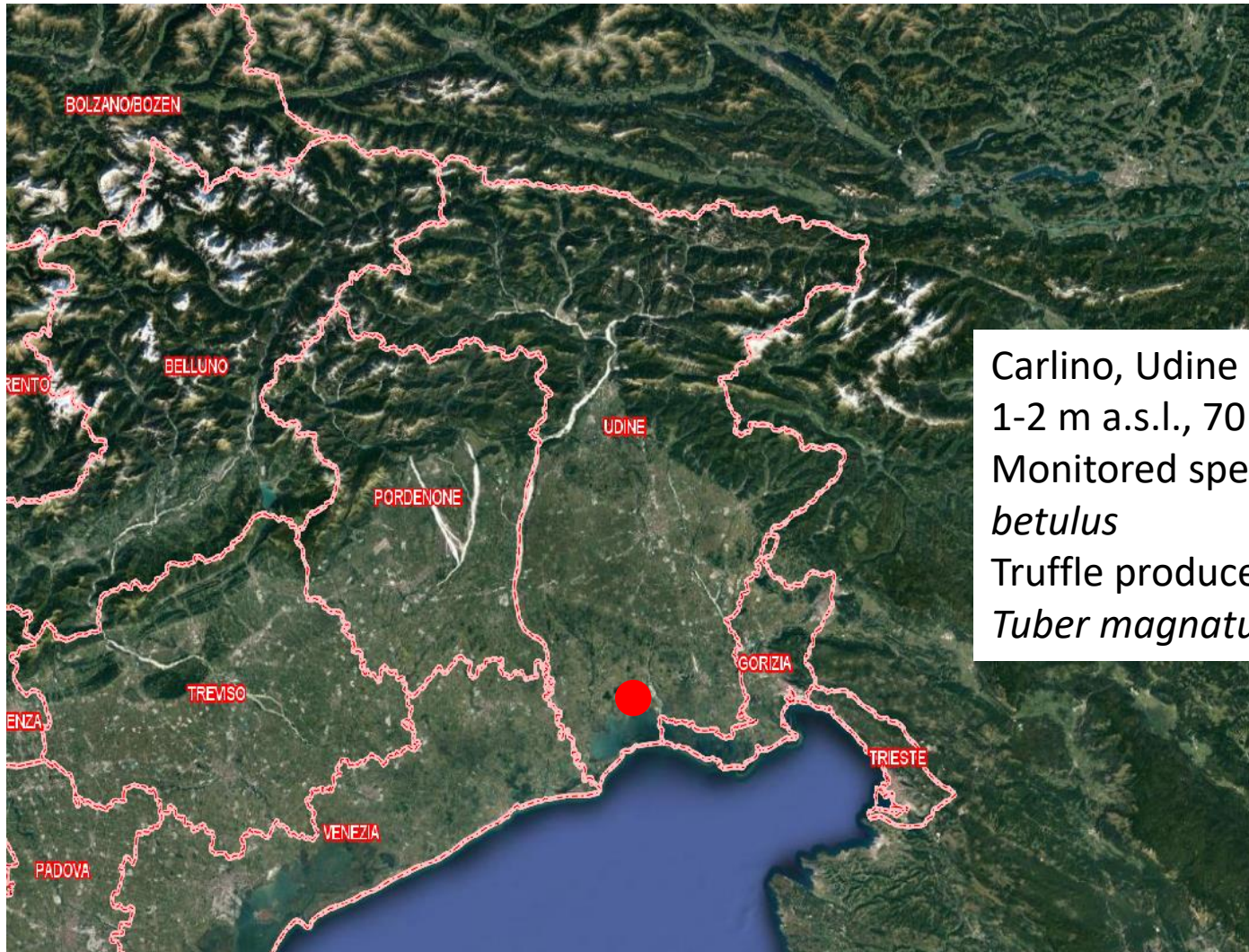


2 sites: Caltrano

- Veneto Region
- Vicenza Province
- Surface 2428 m²
- 500 m a.s.l.
- *Ostrya carpinifolia*
Scop. plantation
- *Tuber aestivum* Vitt.
- Productive and non-productive plants

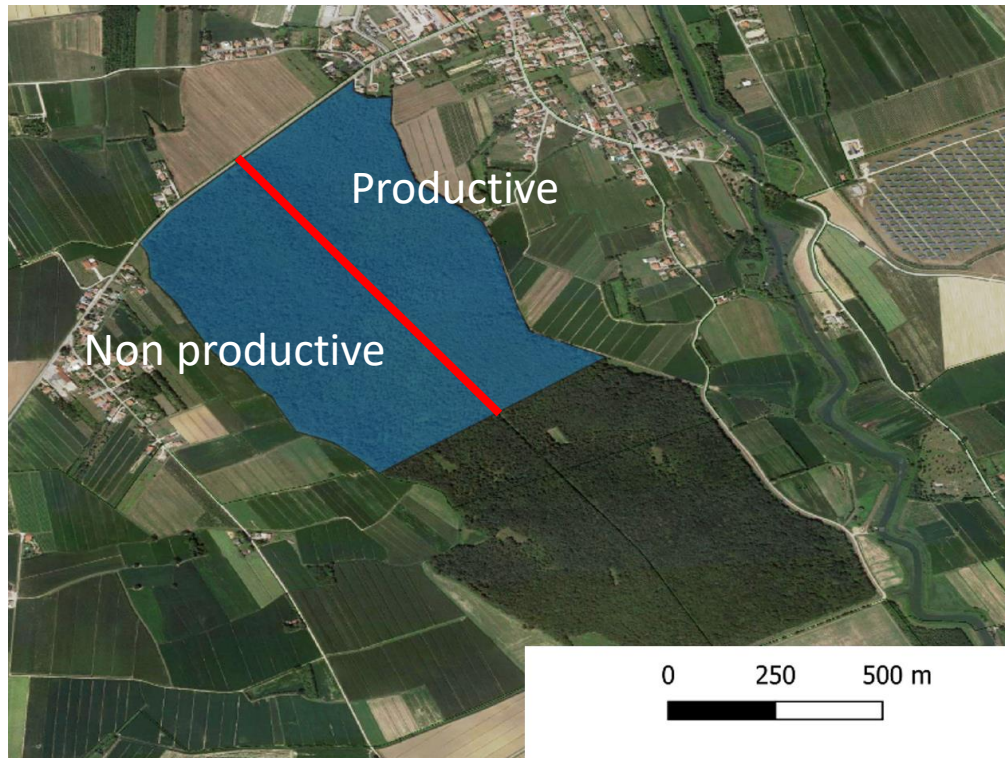


2 sites: Carlino



Carlino, Udine province
1-2 m a.s.l., 70 ha
Monitored species: *Carpinus
betulus*
Truffle produced species:
Tuber magnatum Pico

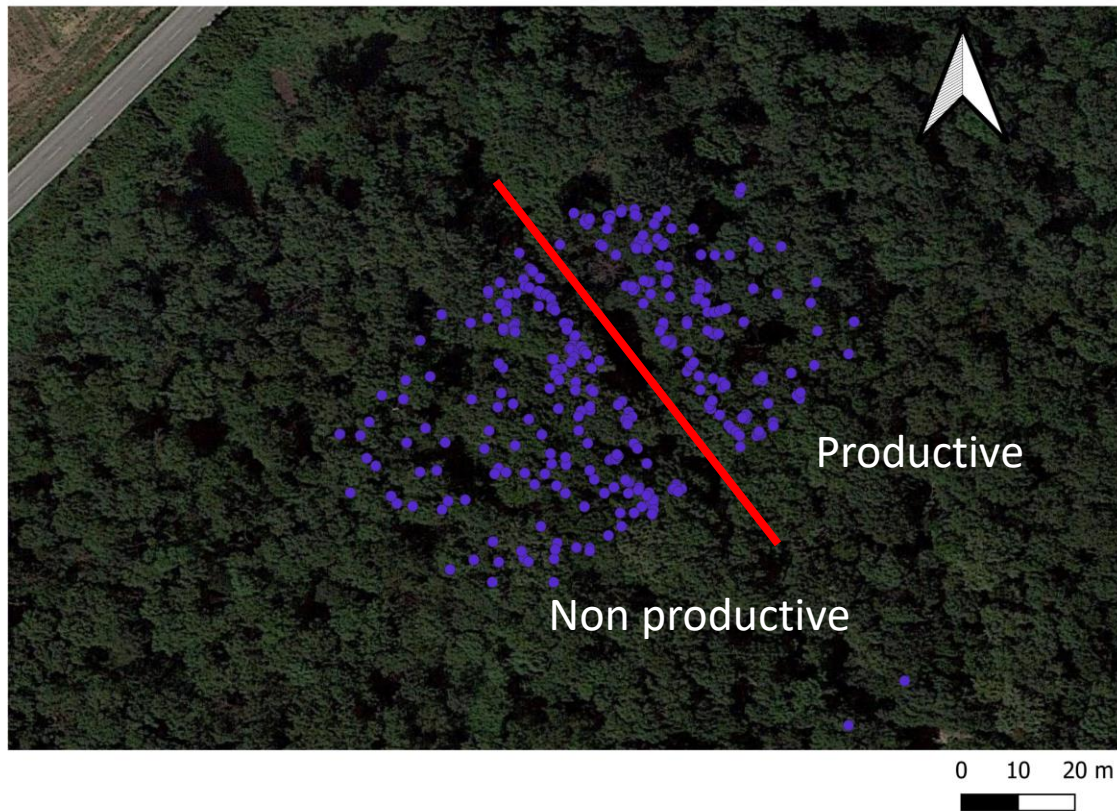
2 sites: Carlino



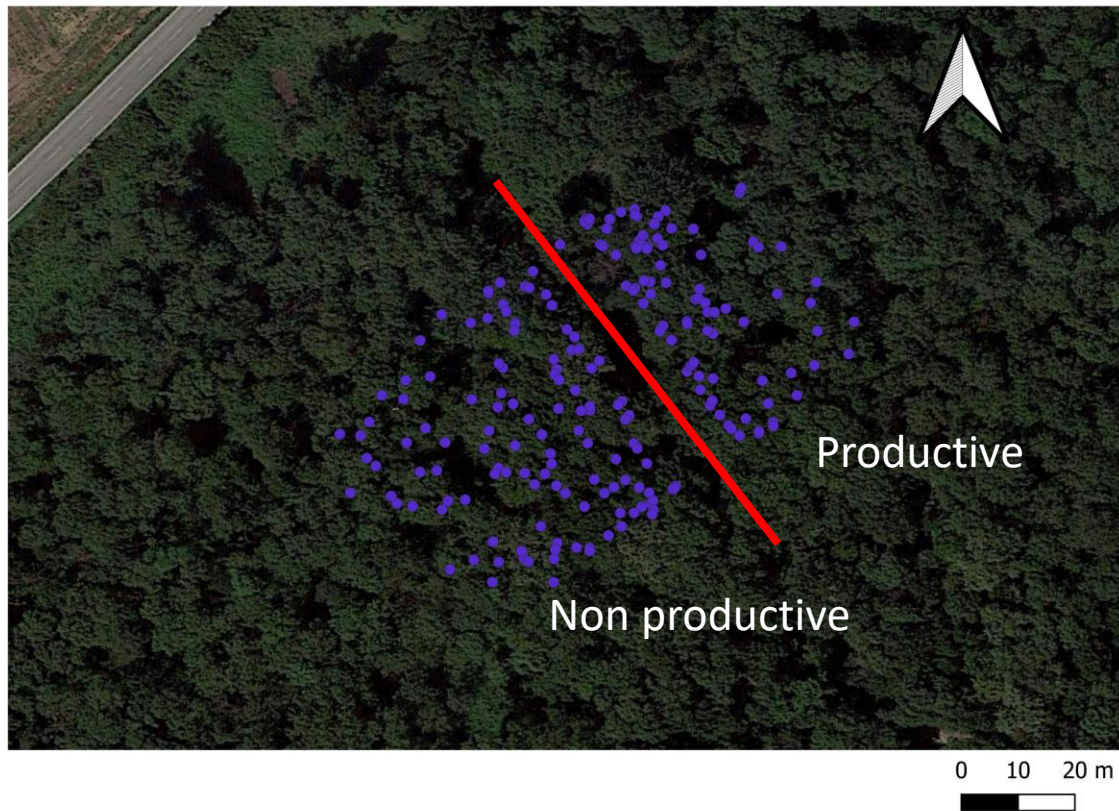
One of the few
remaining
lowland forests

What about the effect of competitiveness on the plants physiology?

2 sites: Carlino-no thinning



2 sites: Carlino-thinning



Thank
you for
attention!

